



TAY VIEWS

A PUBLICATION BY THE TAY ESTUARY FORUM: PROMOTING THE WISE AND SUSTAINABLE USE OF THE TAY ESTUARY AND ITS ADJACENT COASTLINE

ISSUE 19: Spring 2008

The Tay Estuary Forum Annual Conference is once again on the horizon with a full programme of talks on current initiatives on the Tay Estuary and beyond. The afternoon session will be devoted to the formation of the Tay Estuary Forum Management Plan and each delegate will have the chance to contribute their opinions via discussion groups. The flyer for the event is attached to this newsletter and keep an eye on the website for any further updates:

<http://www.dundee.ac.uk/crsem/TEF/>

Also available to download from the website are the questionnaire and maps which will aid collection of information in producing the TEF Management Plan. Feel free to print out and return to the TEF to express your views. The forum also has a change of address which is noted below.

I look forward to seeing everybody at the conference on Fri 18th April
Laura (Project Officer)

In this Issue...

1. TEF Update
2. Broughty Ferry Sea shore Festival
3. Litter
4. Beach Cleans
5. Fife Coastal Path
6. Tentsmuir Interpretation Plan
7. Conference Flyer
8. Booking Form

West Sands, St Andrews, LB 01/07



1: TEF UPDATE

- Last Steering Group meeting Fri 25th January 2008.
- Waterfront Community Action Plan at West Sands in St Andrews agreed with SANDS Liaison Group at Fife Council. Progress to be made this Summer.
- Coastal Futures Conference attended by TEF in London this January. Major themes included Climate Change Mitigation, Marine Bill, European Marine Strategy and Marine Spatial Planning.
- New Steering Group member, David Wishart, Catchment Tay Ltd.
- Questionnaire and maps produced to aid collection of information for the TEF Management Plan- available online.
- Next Steering Group meeting to be held at Dundee University on May 2nd 2008.

Broughty Ferry Sea Shore Festival!

2.

This will be the 11th year in which Dundee City Council's Countryside Ranger Service and other members of the Environment Development Section have organised the annual Sea Shore Festival, held at Broughty Ferry on the 3rd Sunday in June.

Having evolved from the World Oceans Day event, it has grown year on year and continues to attract audiences of between 500-2,000, this being weather-dependent to a large degree!

The Festival, which runs from 12 noon to 4pm, is a platform to raise the profile of the Tay - the river, its catchment, the estuary and the adjacent North Sea and we try to bring together a wealth of interested and associated bodies to look at the Tay from many different angles.

In previous years we have had the RNLI, HM Coastguard, SEPA, Tay Estuary Forum, Scottish Water, Think Before You Flush Campaign, Tayside Recyclers, Shanwell Wildlife Rescue Trust, Broughty Ferry Environment Project, Tay Jet Ski Club, Scottish Wildlife Trust, Dundee Naturalists Society, Royal Naval Reserve, Frigate Unicorn, Dundee City Council Countryside Ranger Service and the RSPB among others. Coupled to this we also have puppet shows, face painters, children's entertainers, a brass band and artists to give the event an overall family theme.

Through this event we aim to get as many people as possible to learn something new about the Tay and and hopefully wanting to learn more; perhaps to the extent of becoming actively involved by joining an organisation or coming along to a practical conservation day or maybe just making their views known regarding various issues which may impact on the Tay.

For 2008 we currently have the Tay Estuary Forum, Shanwell Wildlife Rescue Trust, local RSPB group, Angus & Dundee Bird Club, Local Communities Officer, RNLI fund raising and operations sections, Local Access Officer, Scottish Crop Research Institute, Dundee City Council and Perth & Kinross Council Countryside Ranger Services, Home Composting Officer and Tayside Police Wildlife Crime Prevention Unit all confirmed as attending. We are expecting many others to join us including the Whale & Dolphin Conservation Society, the Sea Mammal Research Unit from St.Andrews University, SEPA and Scottish Water.

On the day 3 marquees are erected in the lee of Broughty Castle and space is then allocated within them, unless organisations prefer to use their own traveling displays or gazebos. All tables and chairs are provided to those who require them and most importantly, there is no cost to attend!

If the name of your organisation has not been mentioned and you would like to come along and support us, or if you would like more information on the event, please contact me by email or by telephone on (01382) 431848, david.ferguson@dundeecity.gov.uk

If you would like to come along I would ask could you please consider having some kind of children's activity on your display/stand so as to make the event as interactive and fun as possible - usually the simplest ones with a quick turn- over work best.

See you on the 15th June! "
(Thanks to D. Ferguson for text and photos of last year's event)



2007 Banner



Long John Silver pays a visit!



Pebble Painting!



Pirate Show!

3.

Half the nation admits to littering!

A whopping forty-six percent of people in Scotland admit that they drop litter despite knowing that it is against the law and they could be fined £50! That is just one of the shocking facts announced today, Wednesday 23 January 2008, by Keep Scotland Beautiful following recent research.

The research findings have been released to coincide with a plea to everyone visiting, living and working in Scotland to have some pride and stop dropping litter – making places look better, reducing the risk to wildlife and increasing community pride.

Programme Manager, Donna Niven said: ‘Dropping litter is not only completely unacceptable, it is against the law. Last year more than 4,000 fixed penalty notices were issued to people caught littering, but it is still costing Scottish local authorities upwards of £70million a year to clean up.

‘Our research highlighted that people felt dropping litter was acceptable because their individual behaviour was of little consequence, especially in areas which were already littered. But, what I’d like people to realise is that if everyone drops even one piece of litter we end up with a huge problem. So I would urge everyone, young and old to play their part’, she added.

Almost half (47%) of the respondents were offended by litter when it was found in their own neighbourhoods or on beaches, with forty-five percent of people being bothered by littered parks. But, in those places which people had a low engagement with, such as business and retail parks, they weren’t nearly so bothered about seeing litter.

The findings also highlighted that a staggering sixty-three percent of 45 to 54 year olds admitted to littering. So despite teenagers and children being perceived as the main litter louts actually all age groups are responsible for the state of our streets and open spaces.

The top five litter items that people were most bothered about were identified as: dog faeces (69%), chewing gum, (49%), food and drink packaging (45%), fast food packaging and left-overs (34%), and needles and plasters (30%).

Ms Niven concluded: ‘These new findings will help us target our Keep Scotland Tidy campaigns at specific audiences helping us to really focus on changing the habits of so many of the Scottish population’.

If you would like to voice your opinions on littering in Scotland please visit www.keeptscotlandbeautiful.org and take part in our on-line survey.



While we're on the subject....



It's that time of year again!!! April's Beach Spring Clean in association with Keep Scotland Beautiful is fast approaching...

If anyone would like to be involved with or organise their own beach clean, please contact the TEF Project Officer for contacts and equipment!



The annual event provides those who are annoyed by litter on their local street, park, riverside or beach with the opportunity to pull on their wellies and a yellow tabard and head out into the fresh air to spring clean the neighbourhood and make a difference.

Last year more than 11,500 volunteers took part in clean up events as part of National Spring Clean during the month of April, gathering enough litter to cover the grass at Hampden with rubbish at least half a meter deep. Now KSB is looking for volunteers to help clean up even more of Scotland in 2008.

Many groups already take part in voluntary clean ups during the year, but Spring Clean provides an opportunity for schools, youth clubs, environmental organisations, voluntary groups, communities, businesses and individuals to play an important part in

Last year's beach clean at Broughty Ferry with Kids Club "School's Out" and the STV news crew

a bigger, coordinated campaign. It is an ideal occasion for anyone who cares about their local environment to take action. To get involved in National Spring Clean 2008 all people have to do is choose a date in April and apply for a Clean Up Kit at

www.keepsotlandbeautiful.org/springclean.

Information and materials will be issued to organisers and this year, for the first time, an online map of events will be published so that litter picks can be easily publicised to others in the area who may wish to get involved. To further tempt people to get involved participants will be able to enter a prize draw and photo competition with prizes generously provided by Greggs.

Chief Executive of KSB, John Summers, OBE said, 'National Spring Clean made a welcome comeback in 2007. Not only does the involvement of the people of Scotland make a marked difference to the cleanliness and environmental standards of their neighbourhoods, but it also helps to kick start our summer tourist season by cleaning Scotland to a standard that both our residents and visitors deserve.'

For further press information please contact Suzanne Roberts on 01786 468236 or e-mail

Suzanne.roberts@ksbscotland.org.uk





The Fife Coastal Path extends for over 90 miles from Culross on the Forth to the Tay Bridge. It offers a variety of different recreational experiences, from smooth-surfaced paths in urban settings to more challenging sections over rough, tidal and relatively remote terrain. It is estimated that the path attracts in the region of half a million visitors annually.

In 2005, Fife Coast and Countryside Trust (FCCT) commissioned a feasibility study for an extension of the Fife Path from Newport-on-Tay to Newburgh. The report concluded that a path along this route – the northern extension - is feasible and that there is a good degree of support among stakeholders for the proposal. The proposed path contributes to a number of high level strategic objectives and links in with Fife Council's core path planning process. In planning the path, major consideration has been given to the sensitive nature of the area, given the number of designations on the estuary and along the shoreline, and to the views of local residents, landowners and land managers.

Perth and Kinross Countryside Trust have undertaken a similar exercise and are planning for a path link from Perth to the boundary near Newburgh. Ultimately there is a joint vision for a path around the Tay from Dundee to Newport-on-Tay via Perth.

In 2007 FCCT kick-started the northern extension project by assigning a Countryside Ranger, Kate Morison, to the area to facilitate the project and develop links with communities along the route. FCCT will establish a "Ranger Base" in the area and hopes to secure office space in Newburgh in the near future. This will give the Ranger Service a permanent presence on the Tay.

The initial phase of the northern extension project has been to revisit and evaluate the various options for the route through a process of ground survey and consultation. Three stakeholder consultations have been undertaken and representations made to interested community groups in the area. General agreement has been reached for the majority of a route and all feedback has been positive to date.

On the basis of the consultations and surveys to date, a new route has been proposed which veers away from the shoreline, extending upwards to Glenduckie and Higham Hills. For much of the way, the path will follow the route of the original coaching road from Newport to Newburgh and shown on 19th Century maps of the area.

The character of this Northern section has a very different feel to the present Fife Coastal Path. It traverses rolling hills and valleys along a sparsely populated coastline while offering outstanding views of the Tay Estuary and beyond.

In terms of infrastructure, the general approach is to utilise existing tracks and rights of way where possible and to make the route barrier-free. In real terms, this will involve replacing stiles with self-closing gates, vegetation control, and waymarking. No major alterations to existing path types are proposed.

In terms of interpretive themes the project offers huge potential - Pictish history, Tay Bridge disaster, geology, reed bed ecology, original whisky production at Lindores Abbey, heritage trees, and ancient orchards to name but a few. A link has been formed with Tilhill Forestry to assist with an outdoor education programme for Dunbog Primary School at Glenduckie Hill Forestry site.

An events programme for 2008 has been put together by the FCCT Ranger Service to help raise the profile of the area and the project. This includes guided walks from Abernethy to Auchtermuchty and Glenduckie to Balmerino. Also there are two open canoe trips from Newburgh to Wormit Bay in the summer and woodland events in Brownies Wood, Gauldry.

The next steps are to confirm consent agreements for the whole route, developing interpretive themes and continuing to build links with local communities. Our objective is to commence work on the ground towards the end of 2008 with completion in 2009.

Thanks to Kate Morison
Countryside Ranger
Fife Coast and Countryside Trust



6.

Implementing a new Tentsmuir Interpretation Plan

Tentsmuir is defined as the N.E. coastal fringe from West Sands, to Tayport. It includes Outhead, the Eden Estuary, Tentsmuir National Nature Reserve, and Tentsmuir Forest.

Tentsmuir is one of the outstanding destinations in Fife with a host of natural and heritage features, situated in an outstanding rural and coastal landscape. Parts of the area are well known, attracting over 300,000 visitors annually, most of them local people. They use the area for a wide variety of purposes including quiet enjoyment, wildlife watching, walking, cycling, horse riding and outdoor education as well as some more specialised activities such as husky dog sled training. Located between St. Andrews and Dundee, Tentsmuir has great potential as a major year-round sustainable tourist destination, building on the high seasonal visitor levels to the nearby, well-visited, urban centres and golf courses. At the same time, recreational and leisure uses must take into account the environmental sensitivity of the area as well as its predominantly rural character.

The implementation of the new Tentsmuir Interpretation Plan by the Tentsmuir Partnership offers a major opportunity to communicate the values and opportunities available in the area through a major upgrade of directional signage, access, interpretation, information and communications and visitor facilities.

The Tentsmuir Partnership

For the past decade there has been a unique, informal partnership among the landowners and land managers in Tentsmuir. Currently, the partnership consists of Fife Coast and Countryside Trust, (responsible for the management of the Fife Coastal Path/North Sea Trail, Eden Estuary and the Eden Centre at Guardbridge), Scottish Natural Heritage (responsible for Tentsmuir National Nature Reserve), and Forestry Commission Scotland (responsible for Tentsmuir Forest), Fife Council, Tayport and Guardbridge Community Councils. The partnership works in close consultation with other landowners and land managers. All are involved in balancing their relative environmental and business responsibilities with providing a good quality and safe visitor experience. The partnership was formed to ensure good communication and “joined up government”, and a forum for local communities to represent their concerns and aspirations.

Through the implementation of the Plan the partnership intends to address, in a uniform and consistent fashion, all of the interpretation and signage needs of the area through the use of a common logo and signage, information and communications and the upgrading of visitor facilities. FCCT has agreed, on behalf of project partners, to coordinate the project and to take the lead in securing the funding.

The Plan is being implemented in 3 phases, at an overall cost estimated at £500,000. Work began in September 2007 and is being carried out by consultants StudioArc and Rob Robinson Heritage Consulting.



Phase I includes a wide range of activities including:

- the development of a new logo and dedicated Tentsmuir website,
- new directional signage to Tentsmuir and within the forest and NNR,
- improved and themed walks and cycle rides
- new behavioural signs
- new interpretation panels for the NNR and Eden Centre
- new leaflets for the Eden Estuary
- an extension of the award winning Education Pack to reflect the new Curriculum for Excellence
- an open sided, multi-use shelter near the Ice House
- an interpretive and information hub at Kinshaldy

In addition to the above, the information panels at the Lundin Bridge entrance to Tentsmuir will be renewed, a new loop trail at Tip Point, Guardbridge will be constructed, and a concept developed for orientation and information panels at Outhead.

All of this work will be completed by Spring 2008. The next phases will include

- a new Tentsmuir leaflet with map and trails
- a family activity booklet
- new interpretation panels for Tentsmuir Forest
- upgraded beach access and interpretation at the Ice House
- an extension to the events programme
- improvements to the boardwalks at Morton Lochs
- outdoor furniture and artwork
- wildlife viewing hide on the foreshore.

Thanks to Julian T Inglis
Fife Coast and Countryside Trust

julian.inglis@fife.gov.uk



To join the mailing list of the TEF or to put forward your views, articles or pictures, see below for the contact details;

Tay Estuary Forum
Project Officer Laura Booth
Room 7014 Matthew Building
University of Dundee
Dundee
DD1 4HN

TayEstuaryForum@dundee.ac.uk
01382 384933





Tay Estuary Forum Annual Conference

Friday 18th April 2008

Sidlaw Suite, West Park Centre
Perth Road, Dundee

9:30am-10am Registration; Finish 4pm

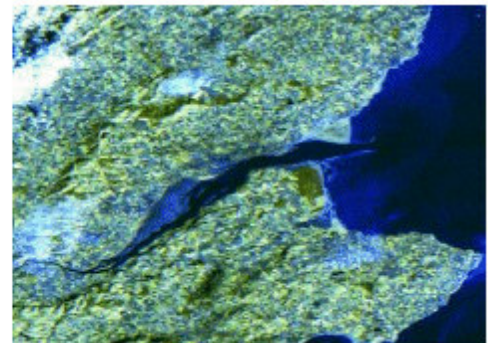
Talks on: Tayside Geodiversity, Sea Eagles, Coastal Flooding,
Newburgh Community Trust, New Perth Development Plans, Marine
Wildlife Watching Code, Tentsmuir Interpretation Plan, Fife
Coastal Path and more.....

Afternoon session:

"Towards a Tay Estuary Forum Management Plan"
break-out discussions and conclusions

Booking form and fee information to follow in March newsletter

Laura Booth;(TEF Project Officer)
Room 7014, Matthew Building
University of Dundee
Dundee DD1 4HN
01382 384933
TayEstuaryForum@dundee.ac.uk
<http://www.dundee.ac.uk/crsem/TEF/>





Tay Estuary Forum Annual Conference 2008

Friday 18th April 2008

West Park Conference Centre Perth Road, Dundee

9:30-10:00 registration

10am START
4pm FINISH

£45. (includes lunch, morning & afternoon coffee & refreshments)

Please return your completed booking form ASAP and by 10th April, so that catering can be finalised.

- Cheques should be made payable to University of Dundee, and forwarded to Tay Estuary Forum, Room 7014, Matthew Building, University of Dundee, Dundee, DD1 4HN.
- Invoices can be provided on request
- Payment should be made before the Conference
- No refunds shall be given for cancellations less than two weeks before the conference

A map showing the location of West Park Conference Centre is available on Dundee University Website: <http://www.dundee.ac.uk/general/campusmap/genlocation.htm>

For further details please contact
Laura Booth (TEF Project Officer)
† 01382 384933
e TayEstuaryForum@dundee.ac.uk

Booking Form

Tay Estuary Forum Annual Conference 2008 – 18th April 2008

Name _____ Organisation _____

Address _____

Email _____ Tele _____

Fax _____

I will be attending for a fee of £45.

No. of places _____ Total amount payable £ _____ Invoice required: Yes/ No

Any special dietary requirements _____

Please return completed booking form to: Tay Estuary Forum,
Room 7014 Matthew Building, University of Dundee, Dundee, DD1 4HN
OR TayEstuaryForum@dundee.ac.uk

Cheques should be made payable to University of Dundee